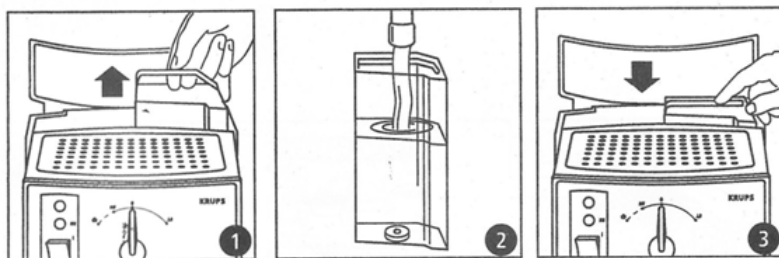
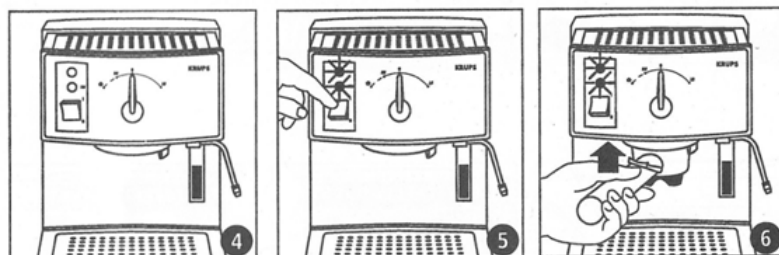


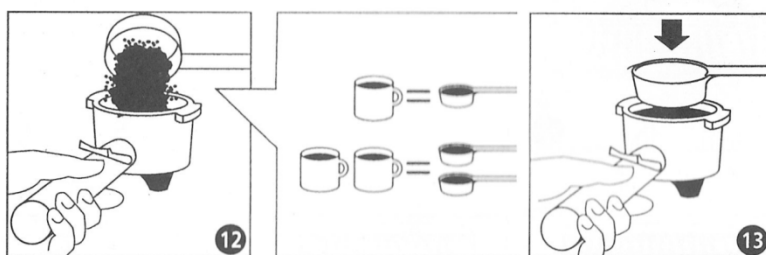
The Nest Healesville Accommodation – Coffee Machine Instructions



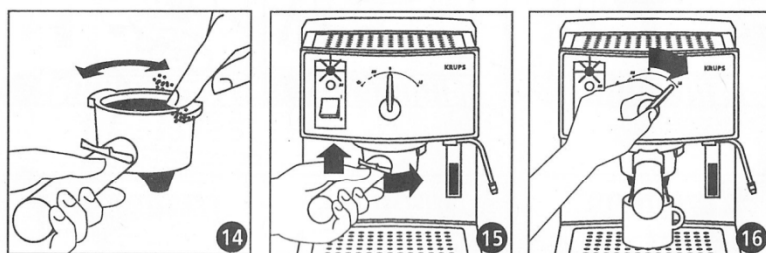
Make sure that there is water in the reservoir. If it is empty the pump will make a loud noise when in use.



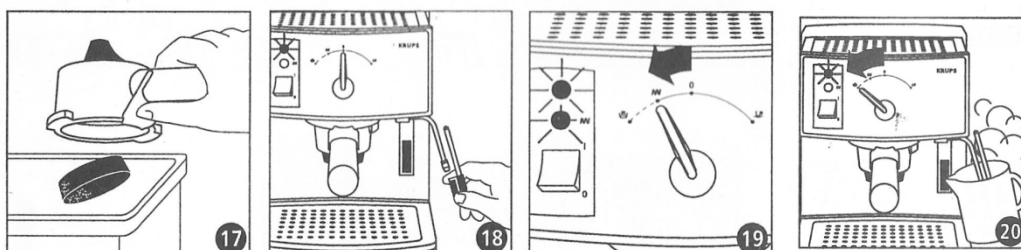
Turn the machine on, both the power and the heating lights come on. Wait for the unit to heat up.



Fill the handle with coffee, press coffee grounds down firmly, clean grounds from the sealing edge (14)



Once the heating light goes out, place the handle into machine and turn until firm. Turn the lever clockwise until firm to make coffee.



To make hot milk, turn the lever to the steam preheating setting. Wait for the heating up light to go out, and then move the lever fully counter-clockwise to steam the milk in a steel jug. Stop steaming when the jug is hot. Alternatively heat milk in your cup for 40 about seconds in the microwave.

Please clean up the coffee machine after use.